

Internet Explorer Setting for Viewing Assessment Overview and other Reports When Not Appearing

Full Screen

1. Run the **Assessment Overview Report** (see the *CSA Manual* or *CSI Manual* for instructions on running this report)
2. **Right-click (#1)** in the frame and Select **Properties**

Questionmark

J Lathem | Logout
Repository: 399008

English

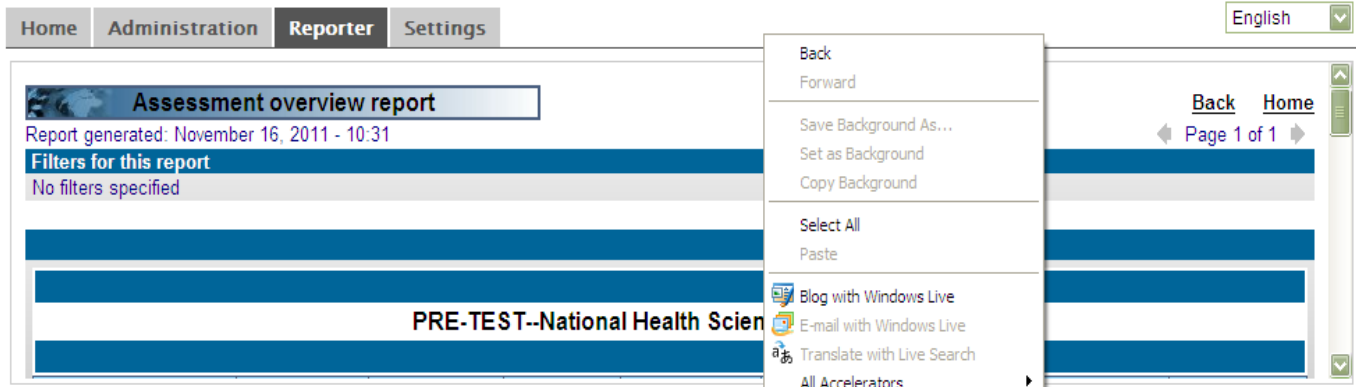
Home Administration **Reporter** Settings

Assessment overview report
Report generated: November 16, 2011 - 10:31

Filters for this report
No filters specified

PRE-TEST--National Health Sci

Back Home
Page 1 of 1



Copyright ©2011 Questionmark Computing Ltd.

#1
Right-click and
Select
Properties

3. Highlight the Address URL (#2) and Click Copy (#3)

Questionmark

Home Administration **Reporter** Settings

Assessment overview report
Report generated: November 16, 2011 - 10:31
Filters for this report
No filters specified

PRE-TEST--Natio

Copyright © 2011 Questionmark Computing Ltd.

J Lathem | Logout
Repository: 399008
English

Back Home
Page 1 of 1

Properties

General

Not Available

Protocol: HyperText Transfer Protocol with Privacy
Type: Firefox Document
Connection: TLS 1.0, RC4 with 128 bit encryption (High); RSA with 2048 bit exchange
Address (URL): overview/view.asp?now=37902.14&report=1702419442
Size: 23247 bytes
Created: 11/16/2011
Modified: 11/16/2011

Undo
Cut
Copy
Paste
Delete
Select All

#2 Highlight the Address URL

#3 Click on Copy

4. Select File, New Window (#4) from the Internet Explorer Menu

Questionmark - Reporter - Windows Internet Explorer

https://ondemand.questionmark.com/399008/reporting/Qlogin.aspx?tab=ER&lang=en

File Edit View Favorites Tools Help

New Tab Ctrl+T
Duplicate Tab Ctrl+K
New Window Ctrl+N
New Session
Open... Ctrl+O
Edit with Microsoft Office Word
Save Ctrl+S
Save As...
Close Tab Ctrl+W
Page Setup...
Print... Ctrl+P
Print Preview...
Send
Import and Export...
Properties
Work Offline
Exit

J Lathem | Logout
Repository: 399008
English

Back Home
Page 1 of 1

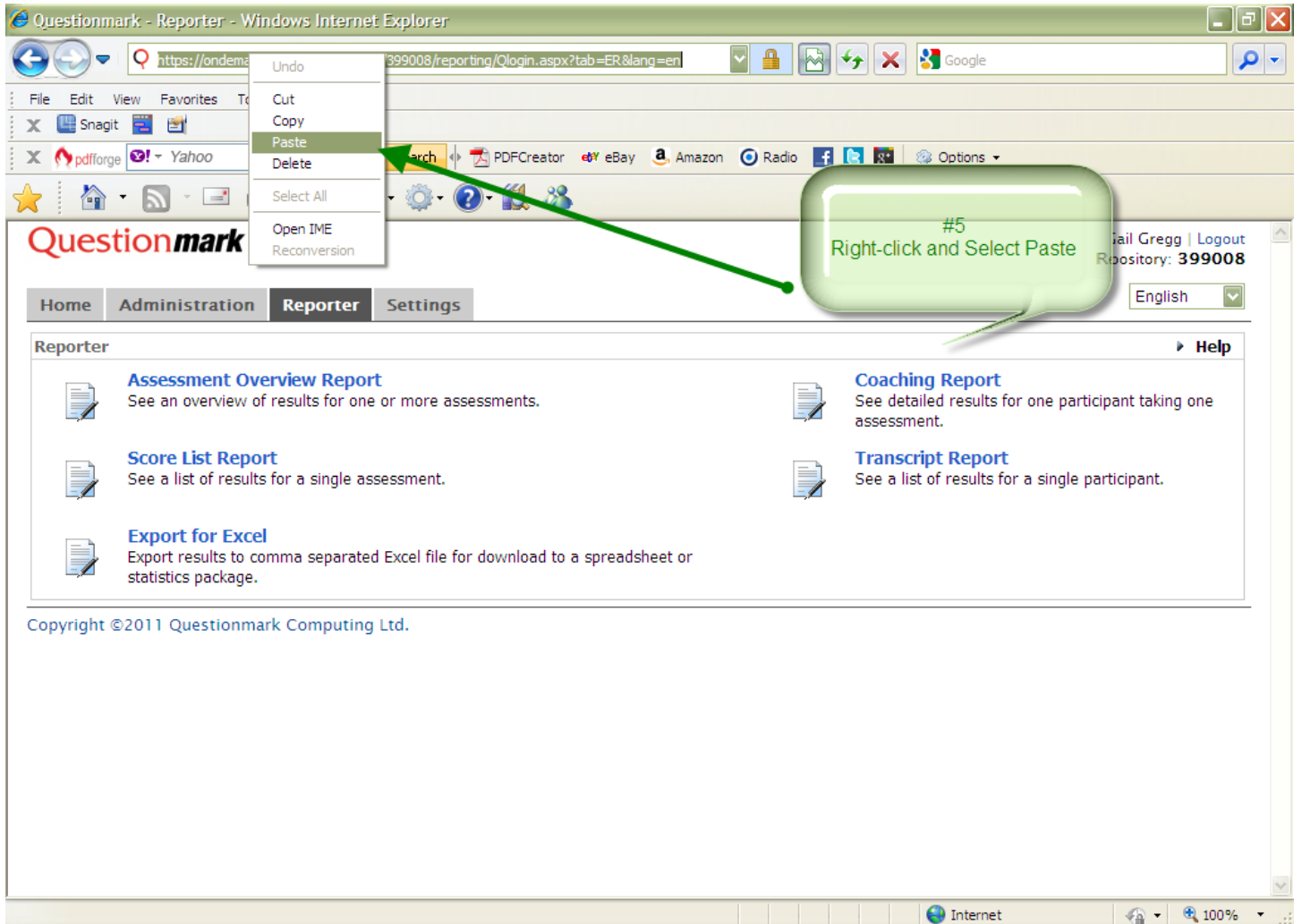
PRE-TEST--National Health Science Assessment

Copyright © 2011 Questionmark Computing Ltd.

#4 Select File and New Window

Opens a new Internet Explorer window.

5. Right-click in the Address bar and Select Paste (#5)



6. Click on Go or press Enter on the Keyboard to open the report in the new window. You should now be able to print the report with no issues.