

Guidance Pictorial Directory



Chris Allen

◆ callen@eoctech.org

Job Title: Counselor

EOC Technology Center
4601 N Choctaw Rd
Choctaw, OK 73020-9017
School Phone: (405) 390-9591
School FAX: (405) 390-9598



Debbie Argo

◆ debbie.argo@mntc.edu

Job Title: Career Advisor

Moore Norman Technology Center
4701 12th Ave NW
Norman, OK 73069-8399
School Phone: (405) 809-3546
School FAX: (405) 217-8277



Lanette Armentrout

◆ larmentrout@cttc.edu

Job Title: Counselor/Director of Student Services/Tech Prep

Chisholm Trail Technology Center
RR 1 Box 60
Omega, OK 73764-9720
School Phone: (405) 729-8324
School FAX: (405) 729-8335



Lynelle Armstrong

◆ lynella@gctech.org

Job Title: Financial Aid Coordinator

Gordon Cooper Technology Center
1 J C Bruton Blvd
Shawnee, OK 74804-9104
School Phone: (405) 273-7493
School FAX: (405) 878-5733

Guidance Pictorial Directory



Susan Arn (Secondary)

◆ susan.arn@metrotech.edu

Job Title: Instructor

Metro Tech-South Bryant Campus

4901 S Bryant Ave

Oklahoma City, OK 73129-8801

School Phone: (405) 605-2223

School FAX: (405) 670-6895



Kelly Arrington

◆ karri@okcareertech.org

Job Title: Guidance Coordinator

Ok Dept Career-Tech

1500 W 7th Ave

Stillwater, OK 74074-4364

School Phone: (405) 743-5159

School FAX: (405) 743-5142



Cole Atkinson

◆ cole.atkinson@mntc.edu

Job Title: Technology Center Representative

Moore Norman Technology Center

4701 12th Ave NW

Norman, OK 73069-8399

School Phone: (405) 364-5763

School FAX: (405) 217-8277



Barbara Baldwin (Secondary)

◆ barbara.baldwin@metrotech.edu

Job Title: Integrated Academics Teacher

Metro Tech-S Bryant

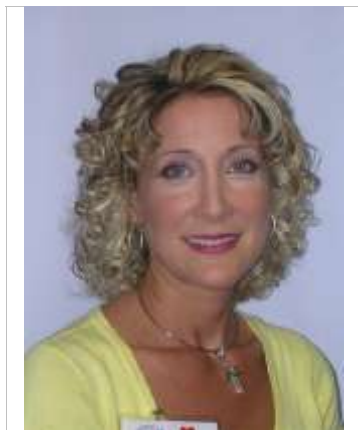
4901 S Bryant Ave.

Oklahoma City, OK 731298801

School Phone: (405) 605-2349

School FAX: (405) 670-6895

Guidance Pictorial Directory



Gina Bankston

◆ gbankston@mid-del.net

Job Title: College Alliance/Alternative Counselor

Mid-Del Technology Center

1621 Maple Drive

Midwest City, OK 73110-4825

School Phone: (405) 739-1707

School FAX: (405) 739-1716



Tammy Barnes

◆ tammy.barnes@tulsatech.edu

Job Title:

Tulsa Tech

3420 S Memorial Dr

Tulsa, OK 74145

School Phone:

School FAX:



Wanda Bean

◆ wbean@pontotocotech.edu

Job Title: Assessment Coordinator

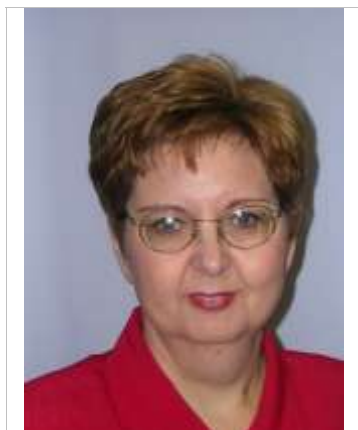
Pontotoc Technology Center

601 W 33rd St

Ada, OK 74820-9791

School Phone: (580) 310-2271

School FAX: (580) 436-0236



Anne Belanus

◆ anneb@meridiantech.edu

Job Title: Career Counselor

Meridian Technology Center

1312 S Sangre Rd

Stillwater, OK 74074-1899

School Phone: (405) 377-3333

School FAX: (405) 372-3466

Guidance Pictorial Directory



Linda Belknap

◆ lbelknap@autrytech.com

Job Title: Counselor

Autry Technology Center
1201 W Willow Rd
Enid, OK 73703-2506
School Phone: (580) 242-2750
School FAX: (580) 233-8262



Sheri Beltz

◆ sbeltz@cttc.edu

Job Title:

Chisholm Trail
RR 1 Box 60
Omega, OK 737649720
School Phone:
School FAX:



Jan Bennett Bell

◆ jan.bell@tulsatech.edu

Job Title: Career Advisor at Tulsa Tech Center-Admin

Tulsa Technology Center-Admin
6111 E Skelly Drive
Tulsa, OK 74147-7200
School Phone: (918) 828-5271
School FAX: (918) 828-5009



Penny Berry (Secondary)

◆ pberry@wtc.tec.ok.us

Job Title: Administrator

Western Technology Center-Burns Flat
PO Box 1469
Burns Flat, OK 73624-1469
School Phone: (580) 562-3181
School FAX: (580) 562-4476

Guidance Pictorial Directory



Sharon Billings

◆ sharonb@ictctech.com

Job Title: Counselor

Indian Capital Technology Center-Muskogee

2403 N 41st St E

Muskogee, OK 74403-1799

School Phone: (918) 687-6383

School FAX: (918) 686-8984



Shelly Blessing-Hallum

◆ shallum@ktc.edu

Job Title: Carl Perkins Counselor

Kiamichi Technology Center-McAlester

301 Kiamichi Drive

McAlester, OK 74501-0308

School Phone: (918) 426-0940

School FAX: (918) 426-1626



Debra Booth

◆ dbooth@cvtech.edu

Job Title: Counselor

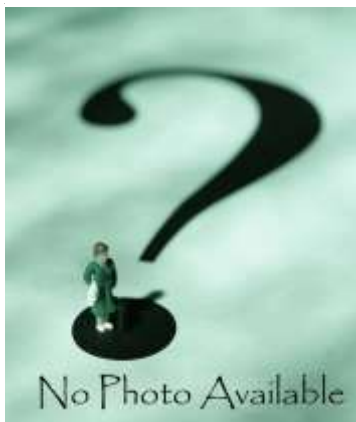
Canadian Valley Technology Center-Czech Hall Road

1701 S Czech Hall Road

Yukon, OK 73099

School Phone: (405) 262-2629

School FAX:



Brian Booth (Secondary)

◆ brian.booth@tulsatech.edu

Job Title: Integrated Academic Instructor, M

Tulsa Technology Center-Riverside

801 East 91st

Tulsa, OK 74132

School Phone: (918) 828-4049

School FAX: (918) 828-4009

Guidance Pictorial Directory



Jennifer Boughan

◆ jbboughan@francistuttle.edu

Job Title:

Francis Tuttle TC
12777 N Rockwell
Oklahoma City, OK 73142
School Phone:
School FAX:



Kelly Brame

◆ kbrame@choctawnation.com

Job Title: Career Counselor

Choctaw Nation Career Developm
1206 West Clayton
Hugo, OK 74743
School Phone: (580) 326-4910
School FAX: (580) 326-3520



Polly Bredy

◆ pbredy@caddokiowa.com

Job Title: Counselor

Caddo-Kiowa Technology Center
P O Box 190
Fort Cobb, OK 73038-0190
School Phone: (405) 643-3244
School FAX: (405) 643-3014



Susan Brooksher

◆ susan.brooksher@tulsatech.edu

Job Title: Counselor

Tulsa Technology Center-Broken Arrow
4600 S Olive Ave
Broken Arrow, OK 74011-1706
School Phone: (918) 828-3034
School FAX: (918) 828-3009

Guidance Pictorial Directory



Pearl Brown (Secondary)

◆ pbrown@gptech.org

Job Title: Counselor

Great Plains Technology Center-Lawton

4500 SW Lee Blvd

Lawton, OK 73505-8399

School Phone: (580) 355-6371

School FAX: (580) 250-5677



Krystal Brue

◆ kbrue@gptech.org

Job Title: Student Development Coordinator

Great Plains TC-Lawton

4500 SW Lee Blvd

Lawton, OK 735058399

School Phone: (580) 355-6371

School FAX: (580) 250-5677



Carrie Brunk

◆ cbrunk@cvtech.edu

Job Title: Counselor

Canadian Valley Technology Center

6505 East Hwy 66

El Reno, OK 730369117

School Phone: (405) 422-2252

School FAX:



Katie Buchanan

◆ katie.buchanan@netech.edu

Job Title: Career Advisement Coordinator

Northeast Technology Centers-Pryor

PO Box 825

Pryor, OK 74362-0825

School Phone: (918) 825-5555

School FAX: (918) 825-6281

Guidance Pictorial Directory



Jennifer Burch

◆ jburch@eoctech.org

Job Title: Tech Prep Coordinator

EOC Technology Center

4601 N Choctaw Rd

Choctaw, OK 73020-9017

School Phone: (405) 390-9591

School FAX: (405) 390-9598



Teresa Burgess

◆ teresa.burgess@mntc.edu

Job Title: Director, Information and Enrollment

Moore Norman Technology Center

4701 12th Ave NW

Norman, OK 73069-8399

School Phone: (405) 364-5763

School FAX: (405) 217-8277



Laurice Butler

◆ laurice.butler@metrotech.edu

Job Title: Director, Recruitment

Metro Tech-Springlake Campus

1900 Springlake Dr

Oklahoma City, OK 73111-5238

School Phone: (405) 605-4444

School FAX: (405) 424-8589



Mary Byrd

◆ mbyrd@autrytech.com

Job Title: Career Counselor

Autry Technology Center

1201 W Willow Rd

Enid, OK 73703-2506

School Phone: (580) 242-2750

School FAX: (580) 233-8262

Guidance Pictorial Directory



Mary Cagigal (Secondary)

◆ mary.cagigal@metrotech.edu

Job Title: Academic Teacher

Metro Tech-South Bryant Campus

4901 S Bryant Ave

Oklahoma City, OK 73129-8801

School Phone: (405) 424-8324

School FAX: (405) 670-6895



Jeanie Caldwell

◆ jcaldwell@lawtonps.org

Job Title: Career Advisor

Lawton High School

601 NW Ft Sill Blvd

Lawton, OK 73507-5499

School Phone: (580) 355-5170

School FAX: (580) 585-6433



Bill Call

◆ bill.call@tulsatech.edu

Job Title: Counselor

Tulsa-Lemley

3420 S Memorial Dr

Tulsa, OK 74145-1390

School Phone: (918) 828-1228

School FAX: (918) 828-1009



Joni Carroll

◆ jonic@centraltech.edu

Job Title: Career Advisor

Central Tech-Drumright

3 C T Circle

Drumright, OK 74030-9613

School Phone: (918) 352-2551

School FAX: (918) 352-2441

Guidance Pictorial Directory



Peggy Castleberry

◆ pcastleberry@cvtech.edu

Job Title: Assessment/Special Needs Counselor

Canadian Valley Technology Center-Chickasha

1401 Michigan Ave

Chickasha, OK 73018-2136

School Phone: (405) 222-7557

School FAX: (405) 222-3839



Jill Chaney

◆ jchaney@swtech.edu

Job Title: Career Counselor

Southwest Tech Center

711 W Tamarack Road

Altus, OK 735211527

School Phone: (580) 477-2250

School FAX: (580) 477-0138



Vera Cheek

◆ vcheel@francistuttle.edu

Job Title: Career Advisor

Francis Tuttle-Rrno

7301 W Reno Avenue

Oklahoma City, OK 73127

School Phone: (405) 717-4650

School FAX: (405) 717-4699



Michael Christie (Secondary)

◆ michaelc@gctech.org

Job Title:

Gordon Cooper TC

1 JC Bruton Blvd

Shawnee, OK 748049104

School Phone:

School FAX:

Guidance Pictorial Directory



Larry Clark

◆ larry.clark@tulsatech.edu

Job Title: Counselor

Tulsa Technology Center-Broken Arrow

4600 S Olive Ave

Broken Arrow, OK 74011-1706

School Phone: (918) 828-3032

School FAX: (918) 828-3009



Ethel Clayton

◆ ethel.clayton@metrotech.edu

Job Title:

Metro Tech

201 NE 48th St

Oklahoma City, OK 73105

School Phone:

School FAX:



Jana Cline

◆ jana.cline@mntc.edu

Job Title: Employment Advisor

Moore Norman Technology Center

4701 12th Ave NW

Norman, OK 73069-8399

School Phone: (405) 364-5763

School FAX: (405) 217-8277



Camille Clinton

◆ camillet@ictctech.com

Job Title: Counselor

Indian Capital Technology Center-Stillwell

Route 6 Box 3320

Stilwell, OK 74960

School Phone: (918) 696-3111

School FAX: (918) 696-3031

Guidance Pictorial Directory



Rhonda Collier (Secondary)

◆ rcollier@ktc.edu

Job Title: Counselor

Kiamichi Technology Center-Durant

810 Waldron Rd

Durant, OK 74701-1904

School Phone: (580) 924-7081

School FAX: (580) 924-2790



Emily Collins

◆ emily.collins@tulsatech.edu

Job Title: Counselor

Tulsa Technology Center

3850 N Peoria Ave

Tulsa, OK 741477200

School Phone: (918) 828-2023

School FAX: (918) 828-2009



Cynthia Collins-Clark

◆ cynde.clark@metrotech.edu

Job Title: Counselor

Metro Tech-Aviation Career Center

5600 S Macarthur Blv

Oklahoma City, OK 73179-8205

School Phone: (405) 605-5540

School FAX: (405) 681-5644



Becky Conner

◆ rconner@francistuttle.edu

Job Title: Career Services Manager

Francis Tuttle-Rockwell

12777 N Rockwell Ave

Oklahoma City, OK 73142-2789

School Phone: (405) 717-4602

School FAX: (405) 717-4112

Guidance Pictorial Directory



Jamie Conway

◆ jconway@rrtc.edu

Job Title: Career Counselor

Red River Technology Center

PO Box 1807

Duncan, OK 735341807

School Phone: (580) 255-2903

School FAX:



Kathe Corning (Secondary)

◆ kcorning@wtc.tec.ok.us

Job Title: Administrator

Western Technology Center-Burns Flat

PO Box 1469

Burns Flat, OK 73624-1469

School Phone: (580) 562-3181

School FAX: (580) 562-4476



Robin Counce (Secondary)

◆ rcounce@choctawnation.com

Job Title: Assistant Director

Choctaw Nation Of Oklahoma

PO Box 1210

Durant, OK 74701

School Phone: (866) 933-2260

School FAX: (405) 743-5541



Brenda Cox

◆ brendac@centraltech.edu

Job Title: Counselor

Central Tech-Drumright

3 C T Circle

Drumright, OK 74030-9613

School Phone: (918) 352-2551

School FAX: (918) 352-2441

Guidance Pictorial Directory



Marilyn Cox (Secondary)

◆ mbcox@rrtc.edu

Job Title: Integrated Academic Coord

Red River Technology Center

PO Box 1807

Duncan, OK 73534-1807

School Phone: (580) 255-2903

School FAX: (580) 255-5652



Joyce Coyle

◆ joyce.coyle@tulsatech.edu

Job Title: Director of Guidance and Career Advisement

Tulsa Technology Center-Admin

6111 E Skelly Drive

Tulsa, OK 74147-7200

School Phone: (918) 828-5000

School FAX: (918) 828-5009



Vicki Craig

◆ vickic@ictctech.com

Job Title: Counselor

Indian Capital Technology Center-Tahlequah

240 VoTech Road

Tahlequah, OK 74464

School Phone: (918) 456-2594

School FAX: (918) 456-0140



Natalie Crawley

◆ natalie.crawley@mntc.edu

Job Title: Technology Center Rep

Moore Norman Technology Center

4701 12th Ave NW

Norman, OK 73069-8399

School Phone: (405) 364-5763

School FAX: (405) 217-8277

Guidance Pictorial Directory



Cedric Cudjoe

◆ ccudjoe@francistuttle.edu

Job Title: Part-Time, Career Advisor

Francis Tuttle-Reno

7301 W Reno Avenue

Oklahoma City, OK 73127

School Phone: (405) 717-4697

School FAX: (405) 717-4699



Chet Cundiff

◆ chetc@centraltech.edu

Job Title: Recruiter

Central Tech-Drumright

3 C T Circle

Drumright, OK 74030-9613

School Phone: (918) 352-2551

School FAX: (918) 352-2441



Yumi Davis

◆ yumi.davis@mntc.edu

Job Title: Business and Information Technology Counselor

Moore Norman TC

4701 12th Ave NW

Norman, OK 730698399

School Phone: (405) 217-8266

School FAX: (405) 217-8273



Shilo Dodd

◆ sdodd@gptech.org

Job Title: Career Counselor

Great Plains Technology Center-Lawton

4500 SW Lee Blvd

Lawton, OK 735058399

School Phone: (580) 355-6371

School FAX: (580) 250-5677

Guidance Pictorial Directory



Debbie Doty

◆ ddoty@matech.edu

Job Title: Assessment Specialist / School Psychologist

Mid-America Technology Center

PO Box H

Wayne, OK 73095-0210

School Phone: (405) 449-3391

School FAX: (405) 449-7321



Jodie Dunn

◆ jdunn@wwtech.org

Job Title: Director of Guidance and Student Services

Wes Watkins Technology Center

7892 Hwy 9

Wetumka, OK 74883-6155

School Phone: (405) 452-5500

School FAX: (405) 452-3561



Arlene Dupree

◆ adupree@sotc.org

Job Title: Counselor

Southern Okla Technology Center

2610 Sam Noble Pkway

Ardmore, OK 73401-2100

School Phone: (580) 223-2070

School FAX: (580) 223-2120



Kim Eason (Secondary)

◆ keaso@okcareertech.org

Job Title: Academic & Transition Specialist

ODCTE

1500 W 7th Ave

Stillwater, OK 74074

School Phone: (405) 743-5596

School FAX:

Guidance Pictorial Directory



Shelley Ebert

◆ sebert@ktc.edu

Job Title: Counselor

Kiamichi Technology Center-Idabel

RR 3 Box 177

Idabel, OK 74745-9534

School Phone: (580) 286-7555

School FAX: (580) 286-3753



Karla Eischen

◆ keischen@kingfisher.k12.ok.us

Job Title: High School Counselor

Kingfisher High School

1500 S. 13th

Kingfisher, OK 73750-3599

School Phone: (405) 375-4191

School FAX: (405) 375-4456



Larry Ellis

◆ larrye@ictctech.com

Job Title: Academic Instructor

Indian Capital Technology Center-Sallisaw

HC 61 Box 12

Sallisaw, OK 74955-9401

School Phone: (918) 775-9119

School FAX: (918) 775-7305



Dana Ellis

◆ dellis@wtc.tec.ok.us

Job Title: Financial Aid

Western Technology Center-Burns Flat

PO Box 1469

Burns Flat, OK 73624-1469

School Phone: (580) 562-3181

School FAX: (580) 562-4476

Guidance Pictorial Directory



Linda Enlow

◆ lindae@centraltech.edu

Job Title: Assistant Director/Counselor

Central Tech-Sapulpa

1720 S Main St

Sapulpa, OK 74066-6453

School Phone: (918) 227-9261

School FAX: (918) 224-3190



Patsy Ernst

◆ patsgarden1@sbcglobal.net

Job Title:

Retired

,

School Phone:

School FAX:



Jay Evans

◆ jevans@francistuttle.edu

Job Title: Career Advisor

Francis Tuttle-Portland

12777 N Rockwell Ave

Oklahoma City, OK 73142-2789

School Phone: (405) 717-4308

School FAX: (405) 755-0028



Lori Evans

◆ lorie@pioneertech.edu

Job Title: Counselor

Pioneer Technology Center

2101 N. Ash Street

Ponca City, OK 74601-1110

School Phone: (580) 762-8336

School FAX: (580) 718-4370

Guidance Pictorial Directory



**Estelle Fant-Poljakow
(Secondary)**

◆ efant@atoka.org

Job Title: Instructor

Kiamichi Tech Center
PO Box 729
Atoka, OK 745250720
School Phone:
School FAX:



Tina Fitzgerald (Secondary)

◆ tina.fitzgerald@mntc.edu

Job Title:

Moore Norman Technology Center
4701 12th Ave NW
Norman, OK 730698399
School Phone:
School FAX:



Linda Ford

◆ linda.ford@metrotech.edu

Job Title: Registrar

Metro Tech-Springlake Campus
1900 Springlake Dr
Oklahoma City, OK 73111-5238
School Phone: (405) 605-4433
School FAX: (405) 424-8589



Jon Ford

◆ jonf@ictctech.com

Job Title: Financial Aid Specialist Asst.

Indian Capital Tech Center
2403 N 41st St.
Muskogee, OK 744031799
School Phone: (918) 687-6383
School FAX: (918) 687-5793

Guidance Pictorial Directory



Gena Fowler

◆ gflower@choctawnation.com

Job Title: Career Counselor

Choctaw Nation

Broken Bow Field Office, PO Box 207

Broken Bow, OK 74728

School Phone: (580) 236-1019

School FAX:



Sheila Foxworthy

◆ sheilaf@pioneertech.edu

Job Title: Career Spec/TP Coordinator

Pioneer Tech Cntr

2101 N. Ash Street

Ponca City, OK 746011110

School Phone: (580) 718-4279

School FAX: (580) 718-4370



Ida Fryhover

◆ ifryhover@matech.edu

Job Title: Technology Center Representative

Mid-America Technology Center

PO Box H

Wayne, OK 73095-0210

School Phone: (405) 449-3391

School FAX: (405) 449-7321



Bobbi Fuchs

◆ bfuchs@cement.k12.ok.us

Job Title: Counselor

Cement High School

Po Box 60

Cement, OK 73017

School Phone: (405) 489-3218

School FAX:

Guidance Pictorial Directory



Stephanie Fugate

◆ sfugate@putnamcityschools.org

Job Title:

Putnam City H.S.
5300 NW 50th St
Oklahoma City, OK 73122
School Phone:
School FAX:



Tami Garcia

◆ tgarcia@tctc.org

Job Title: Financial Aid Specialist

Tri County Technology Center
6101 SE Nowata Road
Bartlesville, OK 74006-6029
School Phone: (918) 331-3263
School FAX: (918) 333-6797



Tobie Gatewood

◆ tobie.gatewood@netech.edu

Job Title:

Northeast TC
1901 N Hwy 88
Claremore, OK 74017
School Phone:
School FAX:



Jil Gaylor

◆ jil.gaylor@tulsatech.edu

Job Title: Counselor

Tulsa Technology Center-Health Sciences Center
3350 S Memorial Dr
Tulsa, OK 74145-1390
School Phone: (918) 828-1232
School FAX: (918) 828-1209

Guidance Pictorial Directory



Susan Gierhart

◆ sgierhart@eoctech.org

Job Title: Applied Academics
EOC Technology Center
4601 N Choctaw Rd
Choctaw, OK 73020-9017
School Phone: (405) 390-9591
School FAX: (405) 390-9598



Tracy Gilbert

◆ tgilbert@choctawnation.com

Job Title:

, OK
School Phone:
School FAX:



Sandra Girdner

◆ sandrag@ictctech.com

Job Title: Financial Aid
Indian Capital TC-Muskogee
2403 N 41st St. E
Muskogee, OK 744031799
School Phone: (918) 687-6383
School FAX: (918) 687-6624

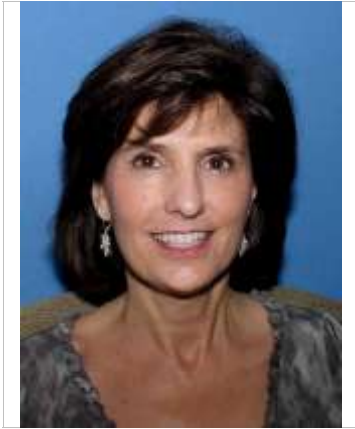


Tom Girten

◆ tom.girten@netech.edu

Job Title: Director, Student Service
Northeast Technology Centers-Afton
PO Box 825
Pryor, OK 74362-0825
School Phone: (918) 825-5555
School FAX: (918) 825-6281

Guidance Pictorial Directory



Susan Gladhill (Secondary)

◆ susan.gladhill@mntc.edu

Job Title: Director, Educational Services

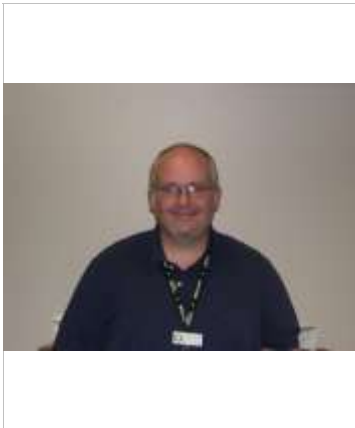
Moore Norman Technology Center

4701 12th Ave NW

Norman, OK 73069-8399

School Phone: (405) 217-8246

School FAX: (405) 217-8277



Kahle Goff

◆ kahleg@pioneertech.edu

Job Title: SHARE/Special Programs Counselor

Pioneer Technology Center

2101 N. Ash

Ponca City, OK 74601

School Phone: (580) 718-4297

School FAX: (580) 718-4351



Sonya Gore

◆ sgore@cvtech.edu

Job Title: Financial Aid Officer

Canadian Valley Technology Center-El Reno

6505 East Hwy 66

El Reno, OK 73036-9117

School Phone: (405) 422-2208

School FAX: (405) 422-2292



Kathy Gosnell

◆ KathyG@centraltech.edu

Job Title: Financial Aid Advisor, both campuses

Central Tech-Drumright

3 C T Circle

Drumright, OK 74030-9613

School Phone: (918) 352-2551

School FAX: (918) 352-2441

Guidance Pictorial Directory



Cori Gray

◆ cgray@putnamcityschools.org

Job Title:

Putnam City N H.S.
11800 N Rockwell
Oklahoma City, OK 73462
School Phone:
School FAX:



Twila Green

◆ tgree@okcareertech.org

Job Title: Oklahoma HSTW State Coordinator

Ok Dept Career-Tech
PO Box 190
Ft. Cobb, OK 73038
School Phone: (405) 643-5511
School FAX: (405) 643-3014



Sara Green

◆ sara.green@metrotech.edu

Job Title: Counselor

Metro Tech-Aviation Career Center
5600 S MacArthur Boulevard
Oklahoma City, OK 73179
School Phone: (405) 605-5540
School FAX: (405) 681-5644



Michael Gustafson (Secondary) ◆ mgustafson@nobleps.com

Job Title:

, OK
School Phone:
School FAX:

Guidance Pictorial Directory



Jennifer Haile-Egbert

◆ jhaile-egbert@francistuttle.edu

Job Title: Advisor

Francis Tuttle-Rockwell
12777 N Rockwell Ave
Oklahoma City, OK 73142-2789
School Phone: (405) 717-4252
School FAX: (405) 717-4790



Karen Hall

◆ karenhall@tulsatech.edu

Job Title:

Tulsa Tech
3420 S Memorial Dr
Tulsa, OK 741451390
School Phone:
School FAX:



Carol Hall (Secondary)

◆ chall@francistuttle.edu

Job Title: Integrated Academic Instructor

Francis Tuttle-Rockwell
12777 N Rockwell Ave
Oklahoma City, OK 73142-2789
School Phone: (405) 717-7799
School FAX: (405) 717-4112



Stacy Hallmark

◆ shallmark@choctawnation.com

Job Title:

Choctaw Nation of Oklahoma
P O Box 1210
Durant, OK 74702
School Phone:
School FAX:

Guidance Pictorial Directory



Jamie Hamil

◆ jhamil@choctawnation.com

Job Title: Career Counselor

Choctaw Nation Career Developm

PO Box 1210

Durant, OK 74702

School Phone: (580) 920-2260

School FAX: (580) 920-1514



Andrew Hammontree

◆ ahammontree@francistuttle.edu

Job Title: Director of Financial Aid & Scholarships

Francis Tuttle-Rockwell

12777 N Rockwell Ave

Oklahoma City, OK 73142-2789

School Phone: (405) 717-4336

School FAX: (405) 717-4392



Kim Hansen

◆ kim.hansen@metrotech.edu

Job Title: Counselor

Metro Tech-Adult & Cont Ed

201 NE 48th St

Oklahoma City, OK 73105-3312

School Phone: (405) 605-3302

School FAX: (405) 528-1512



Jane Harris

◆ jharris@nwtech.edu

Job Title:

Northwest TC

801 Vo Tech Dr

Fairview, OK 737370250

School Phone:

School FAX:

Guidance Pictorial Directory



Laura Harrison

◆lharrison@ktc.edu

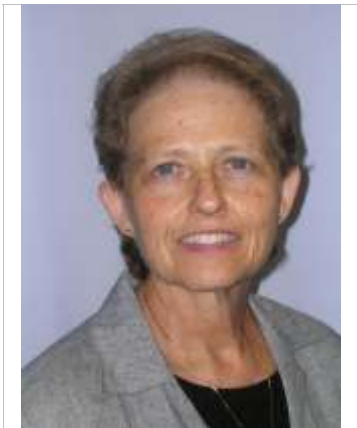
Job Title: Student Services Coordinator
Kiamichi Technology Center-Poteau
PO Box 825
Poteau, OK 74953-0825
School Phone: (918) 647-4525
School FAX: (918) 647-4527



Deena Harvey

◆dharvey@gctcok.com

Job Title:
Green Country TC
P O Box 1217
Okmulgee, OK 74447
School Phone:
School FAX:



Nancy Hasley

◆nhasley@gptech.org

Job Title: Counselor
Great Plains Technology Center-Frederick
2001 E Gladstone Ave
Frederick, OK 73542-4600
School Phone: (580) 335-5525
School FAX: (580) 335-2209



Sheila Hellen (Secondary)

◆sheila.hellen@tulsatech.edu

Job Title: Director, Student Services
Tulsa Technology Center-Admin
6111 E Skelly Drive
Tulsa, OK 74147-7200
School Phone: (918) 828-5201
School FAX: (918) 828-5009

Guidance Pictorial Directory



Amy Henderson

◆ ahenderson@francistuttle.edu

Job Title: Enrollment Services Manager

Francis Tuttle-Rockwell
12777 N Rockwell Ave
Oklahoma City, OK 73142-2789
School Phone: (405) 717-4245
School FAX: (405) 717-4112



Jill Henderson

◆ jhenderson@wtc.tec.ok.us

Job Title: Counselor

Western Technology Center
PO Box 1469
Burns Flat, OK 736241469
School Phone: (580) 562-3181
School FAX:



Beth Henderson

◆ beth.henderson@tulsatech.edu

Job Title: Career Advisor

Tulsa Technology Center-Admin
6111 E Skelly Drive
Tulsa, OK 74147-7200
School Phone: (918) 828-5224
School FAX: (918) 828-5009



Jim Hightower

◆ jim.hightower@mntc.edu

Job Title: Counselor

Moore Norman Technology Center
4701 12th Ave NW
Norman, OK 73069-8399
School Phone: (405) 217-8266
School FAX: (405) 217-8277

Guidance Pictorial Directory



Dawn Hix

◆ dhix@choctawnation.com

Job Title: IDA Coordinator

Choctaw Nation

PO Box 1210

Durant, OK 74702

School Phone: (580) 920-2260

School FAX: (580) 920-1514



Judy Holland

◆ jholland@gptech.org

Job Title: Pre-Education Instructor

Great Plains TC-Lawton

4500 SW Lee Blvd

Lawton, OK 735058399

School Phone: (580) 250-5610

School FAX: (580) 250-5677



Ginny Howell

◆ ghowell@cvtech.edu

Job Title: Counselor

Canadian Valley Technology Center-Chickasha

1401 Michigan Ave

Chickasha, OK 73018-2136

School Phone: (405) 224-7220

School FAX: (405) 222-3839



Linda Hubbard (Secondary)

◆ lindah@centraltech.edu

Job Title: Tech Prep/Curriculum Coordinator

Central Tech-Drumright

3 C T Circle

Drumright, OK 74030-9613

School Phone: (918) 352-2551

School FAX: (918) 352-2441

Guidance Pictorial Directory



P. Gail Huddleston

◆ ghuddleston@ktc.edu

Job Title: Coordinator, Student Services

Kiamichi TC-McAlester

301 Kiamichi Drive

McAlester, OK 745010308

School Phone: (918) 426-0940

School FAX: (918) 426-1626



Retta Hulsey

◆ rhulsey@cvtech.edu

Job Title: Assessment Specialist

Canadian Valley Technology Center-El Reno

6505 East Hwy 66

El Reno, OK 73036-9117

School Phone: (405) 422-2318

School FAX: (405) 422-2292



Carmen Hunt

◆ chunt@wwtech.org

Job Title: Financial Aid

Wes Watkins Technology Center

7892 Hwy 9

Wetumka, OK 74883-6155

School Phone: (405) 452-5500

School FAX: (405) 452-3561



Deidre Inselman

◆ dinselman@choctawnation.com

Job Title:

Choctaw Nation of Oklahoma

P O Box 1210

Durant, OK 74702

School Phone:

School FAX:

Guidance Pictorial Directory



Cindy Jack

◆ cindyj@ictctech.com

Job Title: Career Placment Specialist

Indian Capital Technology Center-Muskogee

2403 N 41st St E

Muskogee, OK 74403-1799

School Phone: (918) 348-7933

School FAX: (918) 687-6624



Penny James

◆ pjames@choctawnation.com

Job Title: Career Counselor

Choctaw Nation Career Development

PO Box 1210

Durant, OK 74702

School Phone: (580) 775-0514

School FAX: (580) 920-1514



Khanita Jefferson

◆ khanita.jefferson@metrotech.edu

Job Title: Career Tech Advisor

Metro Tech-Springlake Campus

1900 Springlake Dr

Oklahoma City, OK 73111-5238

School Phone: (405) 595-4443

School FAX: (405) 424-7809



Karen Johnson (Secondary)

◆ karen.johnson@tulsatech.edu

Job Title: Director, Prospective Student Services

Tulsa Technology Center-Admin

6111 E Skelly Drive

Tulsa, OK 74147-7200

School Phone: (918) 828-5206

School FAX: (918) 828-5009

Guidance Pictorial Directory



Jessica Johnson-Bullock

◆ jbullock@francistuttle.edu

Job Title:

Francis Tuttle
12777 N Rockwell
Oklahoma City, OK 73142
School Phone:
School FAX:



Joelle Jolly (Secondary)

◆ jjolly@gptech.org

Job Title: Director, Student Support Services

Great Plains Technology Center-Lawton
4500 SW Lee Blvd
Lawton, OK 73505-8399
School Phone: (580) 250-5640
School FAX: (580) 250-5677



Joyce Jones

◆ jdjones@ktc.edu

Job Title: Coordinator, Academic Center

Kiamichi Technology Center-Talihina
RR 2 Box 1800
Talihina, OK 74571-9518
School Phone: (918) 567-2264
School FAX: (918) 567-3359



Lois Jones

◆ ljones@metrotech.edu

Job Title: Counselor

Metro Tech-Springlake Campus
1900 Springlake Dr
Oklahoma City, OK 73111-5238
School Phone: (405) 605-4642
School FAX: (405) 424-8589

Guidance Pictorial Directory



Natalie Jordan

◆ njordan@francistuttle.edu

Job Title:

Francis Tuttle
12777 N Rockwell
Oklahoma City, OK 73142
School Phone:
School FAX:



Patsy Jordan (Secondary)

◆ pjordan@eoctech.org

Job Title: Co-op Counselor

EOC Technology Center
4601 N Choctaw Rd
Choctaw, OK 73020-9017
School Phone: (405) 390-9591
School FAX: (405) 390-9598



Gib Jordan

◆ gib.jordan@mntc.edu

Job Title: Career Advisor

Moore Norman Technology Center
4701 12th Ave NW
Norman, OK 73069-8399
School Phone: (405) 364-5763
School FAX: (405) 217-8277



Jo Kahn

◆ jkahn@okcareertech.org

Job Title: Coordinator - Career and Employment Information Services

Ok Dept Career-Tech
1500 W 7th Ave
Stillwater, OK 74074-4364
School Phone: (405) 743-5404
School FAX: (405) 743-6809

Guidance Pictorial Directory



James Keeton

◆ james.keeton@edmondschools.net

Job Title: Career Counselor

Edmond-Santa Fe High School

1901 SW 15th St

Edmond, OK 73013-6604

School Phone: (405) 340-2230

School FAX: (405) 330-7370



Patricia Kelly (Secondary)

◆ picpk@sbcglobal.net

Job Title: Executive Director

Oklahoma DHS

2400 N Lincoln Blvd

OKC, OK 73105

School Phone: (405) 235-2651

School FAX:



Kelly Kent

◆ kellyk@ictctech.com

Job Title: Academic Center Instructor

Indian Capital Technology Center-Tahlequah

240 VoTech Road

Tahlequah, OK 74464

School Phone: (918) 456-2594

School FAX: (918) 456-0140



Kerensa Kester

◆ kkester@tctc.org

Job Title: Director, Enrollment Services

Tri County Technology Center

6101 SE Nowata Road

Bartlesville, OK 74006-6029

School Phone: (918) 331-3375

School FAX: (918) 333-6797

Guidance Pictorial Directory



Michelle Ketcherside

◆ mketcherside@hptc.net

Job Title:

, OK

School Phone:

School FAX:



Dana Kimble

◆ danak@gctech.org

Job Title: Secondary Counselor

Gordon Cooper Technology Center

1 J C Bruton Blvd

Shawnee, OK 74804-9104

School Phone: (405) 273-7493

School FAX: (405) 273-4704



Tina King

◆ tking2@francistuttle.edu

Job Title: Student Career Advisor

Francis Tuttle-Rockwell

12777 N Rockwell Ave

Oklahoma City, OK 73142-2789

School Phone: (405) 717-4319

School FAX: (405) 717-4790



Danny King (Secondary)

◆ dking@francistuttle.edu

Job Title: Assistant Director

Francis Tuttle-Portland

12777 N Rockwell Ave

Oklahoma City, OK 73142-2789

School Phone: (405) 717-4273

School FAX: (405) 755-0028

Guidance Pictorial Directory



Paul King

◆ paul.king@tulsatech.edu

Job Title: Career Advisor

Tulsa Technology Center-Lemley

PO Box 477200

Tulsa, OK 741477200

School Phone: (918) 828-5293

School FAX: (918) 828-5209



Ann Kinsinger

◆ annk@pioneertech.edu

Job Title: Employment Training Coordinator

Pioneer Technology Center

2101 N. Ash Street

Ponca City, OK 74601-1110

School Phone: (580) 762-8336

School FAX: (580) 762-3107



Mendy Klepper

◆ mkelpper@cvtc.edu

Job Title: Counselor

Canadian Valley - El Reno

6505 E Hwy 66

El Reno, OK 730369117

School Phone: (405) 422-2268

School FAX: (405) 422-2292



Karen Koehn

◆ karenk@nwtech.edu

Job Title: Counselor

Northwest Technology Center-Alva

1801 S 11th St

Alva, OK 73717-9600

School Phone: (580) 327-0344

School FAX: (580) 327-5467

Guidance Pictorial Directory



Brenda Krieger

◆ bkrieger@swtech.edu

Job Title: Director, Student Service

Southwest Technology Center

711 W Tamarack Road

Altus, OK 73521-1527

School Phone: (580) 477-2250

School FAX: (580) 477-0138



Cindy Lattimore

◆ cindyl@ictctech.com

Job Title: Career Counselor

Indian Capital Technology Center-Sallisaw

HC 61 Box 12

Sallisaw, OK 74955-9401

School Phone: (918) 775-9119

School FAX: (918) 776-9800



Tommi Leach

◆ tleac@okcareertech.org

Job Title: Career & Acad Advisement Specialist

Ok Dept Career-Tech

1500 W 7th Ave

Stillwater, OK 74074-4364

School Phone: (405) 743-5524

School FAX: (405) 743-5142



Jane Linn

◆ jlinn@putnamcityschools.org

Job Title:

Putnam City West/Francis Tuttle

8500 NW 23rd St

Oklahoma City, OK 73127

School Phone: (405) 787-1140

School FAX:

Guidance Pictorial Directory



Dawnette Long

◆ dlong@wwtech.org

Job Title: Career Recruiter

Wes Watkins Tech Center

7892 Hwy 9

Wetumka, OK 748836155

School Phone: (405) 452-5500

School FAX: (405) 452-5706



Kim Lopez

◆ klopez@tctc.org

Job Title: Assessment Specialist

Tri County Technology Center

6101 SE Nowata Road

Bartlesville, OK 74006-6029

School Phone: (918) 331-3226

School FAX: (918) 333-6797



Sylvia Loveday

◆ sloveday@rrtc.edu

Job Title: Career Specialist

Red River Technology Center

PO Box 1807

Duncan, OK 73534-1807

School Phone: (580) 255-2903

School FAX: (580) 252-1357



Daralyn Loveless

◆ daralyn.j.loveless@westernheights.k12.ok.us

Job Title: Career Specialist

Western Heights School System

8201 SW 44th St

Oklahoma City, OK 73179

School Phone: (405) 350-3439

School FAX: (405) 745-6315

Guidance Pictorial Directory



Patricia Lovell

◆ pattyl@nwtech.edu

Job Title: Guidance/Financial Aid

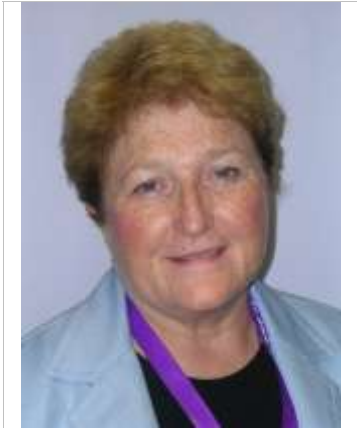
Northwest Technology Center-Fairview

801 Votech Drive

Fairview, OK 73737-0250

School Phone: (580) 227-3708

School FAX: (580) 227-2651



Pamela Lundy

◆ [lundypa@tulsaschools.org](mailto:lundy@tulsaschools.org)

Job Title: Academic Integration Specialist

Tulsa Public Schools

3027 S New Haven

Tulsa, OK 74114

School Phone: (918) 746-6411

School FAX: (918) 746-6239



Ryan Lynes

◆ rlynes@tctc.org

Job Title: Counselor

Tri County Technology Center

6101 SE Nowata Road

Bartlesville, OK 74006-6029

School Phone: (918) 331-3350

School FAX: (918) 333-6797



Teresa Marshall

◆ teresam@ictctech.com

Job Title: Academic Center Instructor

Indian Capital Technology Center-Muskogee

2403 N 41st St E

Muskogee, OK 74403-1799

School Phone: (918) 348-7909

School FAX: (918) 687-6624

Guidance Pictorial Directory



Rosalind Martin

◆ rosalind.martin@metrotech.edu

Job Title: Director, Financial Aid

Metro Tech-Springlake Campus
1900 Springlake Dr
Oklahoma City, OK 73111-5238
School Phone: (405) 605-4437
School FAX: (405) 424-4010



Cynthia Martin

◆ cmartin@choctawnation.com

Job Title: Career Counselor

Choctaw Nation Of Oklahoma
PO Box 1210
Durant, OK 74702-121
School Phone: (580) 924-8280
School FAX:



DeAnn Martin (Secondary)

◆ deann.martin@mntc.edu

Job Title: Deaf Education Instructor

Moore Norman Technology Center
4701 12th Ave NW
Norman, OK 73069-8399
School Phone: (405) 364-5763
School FAX: (405) 217-8277



Deb McCaskey

◆ deb.mccaskey@tulsatech.edu

Job Title: Employment Services Coordinator

Tulsa Technology Center
6111 E Skelly Drive
Tulsa, OK 741477200
School Phone: (918) 828-5216
School FAX: (918) 828-5229

Guidance Pictorial Directory



Kathy McCaulla

◆ KMCCAULLA@matech.edu

Job Title: Career Counselor

Mid-America Technology Center

PO Box H

Wayne, OK 73095-0210

School Phone: (405) 449-3391

School FAX: (405) 449-7321



Belinda McCharen

◆ belinda.mccharen@okstate.edu

Job Title: Associate Professor and Francis Tuttle Endowed Chair

Oklahoma State University

255 Willard

Stillwater, OK 74078

School Phone: (405) 744-9502

School FAX:



Tiffany McCormack

◆ tmmccormack@swtech.edu

Job Title:

Southwest TC

711 W Tamarackj

Altus, OK 73521

School Phone:

School FAX:



Katrina McDowell

◆ kmcdowell@hptc.net

Job Title: Financial Aid Director/ Tech Prep Coordinator

High Plains Tech Center

3921 34th St

Woodward, OK 738017000

School Phone: (580) 256-6618

School FAX: (580) 571-6180

Guidance Pictorial Directory



Pamela McEachern

◆ pmceachern@caddokiowa.com

Job Title: Coordinator, OneStop

Caddo-Kiowa Technology Center

P O Box 190

Fort Cobb, OK 73038-0190

School Phone: (405) 643-5511

School FAX: (405) 643-3014



Sheryl McGhghy

◆ smcghghy@rrtc.edu

Job Title: Testing and Assessment Coordinator

Red River Technology Center

PO Box 1807

Duncan, OK 73534-1807

School Phone: (580) 255-2903

School FAX: (580) 252-1357



Edna McMillan (Secondary)

◆ ednam@ictctech.com

Job Title: Math and Science Specialist

Indian Capital Tech Center - Muskogee

2403 N 41st St E

Muskogee, OK 744301799

School Phone: (918) 687-6383

School FAX: (918) 687-6624



Tina McMurtrey

◆ tmcsmurtrey@ktc.edu

Job Title: Financial Aid Officer

Kiamichi Tech Center - McAlester

301 Kiamichi Dr

McAlester, OK 745010308

School Phone: (918) 426-0940

School FAX: (918) 426-1626

Guidance Pictorial Directory



Dennis McRee

◆ dmcree@wtc.tec.ok.us

Job Title: Career Specialist

Western Tech- Burns Flat

PO Box 1469

Burns Flat, OK 736241469

School Phone: (580) 562-3181

School FAX: (580) 562-4476



DeWayne Mead

◆ dewayne.mead@netech.edu

Job Title: Director, Student Service

Northeast Technology Centers-Afton

PO Box 219

Afton, OK 74331-0219

School Phone: (918) 257-8324

School FAX: (918) 257-4342



Judy Merrill

◆ judy.merrill@tulsatech.edu

Job Title: Financial Aid Consultant

Tulsa Technology Center

6111 E Skelly Drive

Tulsa, OK 741477200

School Phone: (918) 828-5215

School FAX: (918) 828-5009



Jeff Miller

◆ milleje2@tulsaschools.edu

Job Title: College and Career Readiness Specialist

Tulsa School system

3027 S New Haven

Tulsa, OK 74114

School Phone: (918) 745-6303

School FAX: (918) 746-6289

Guidance Pictorial Directory



Rhonda Mize

◆ rmize@choctawnation.com

Job Title: Career Counselor

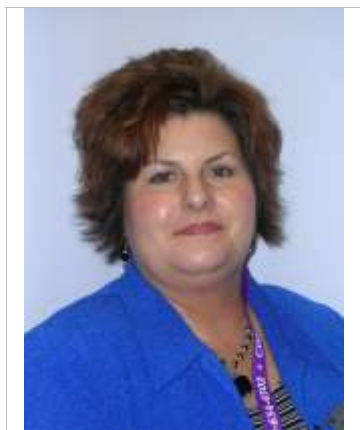
Choctaw Nation Career Developm

PO Box 1210

Durant, OK 74702

School Phone: (580) 920-2260

School FAX: (580) 920-1514



Kimberly Montrose

◆ kthomas@francistuttle.edu

Job Title: Dropout Retention Coordinator

Francis Tuttle-Rockwell

12777 N Rockwell Ave

Oklahoma City, OK 73142-2789

School Phone: (405) 717-4148

School FAX: (405) 717-4112



Angela Morris

◆ angela.morris@tulsatech.edu

Job Title: College Relations Coordinator

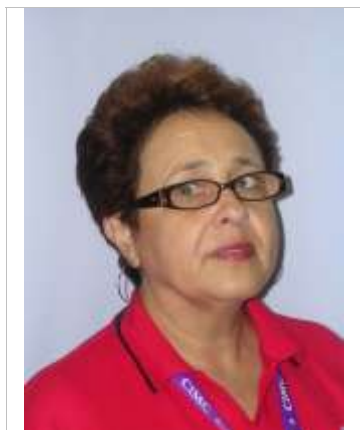
Tulsa Technology Center-Admin

6111 E Skelly Drive

Tulsa, OK 74147-7200

School Phone: (918) 828-5205

School FAX: (918) 828-5229



Rita Morris

◆ rmorris@matech.edu

Job Title: Counselor

Mid-America Technology Center

PO Box H

Wayne, OK 73095-0210

School Phone: (405) 449-3391

School FAX: (405) 449-7321

Guidance Pictorial Directory

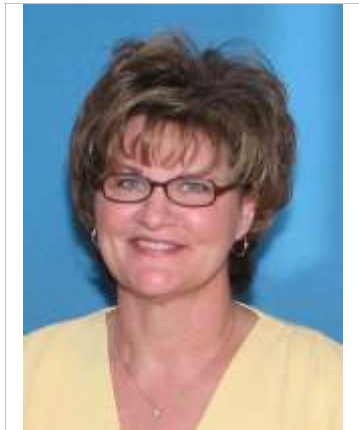


Kathie Morris

◆ kathiem@ictech.com

Job Title:

Indian Capital TC
240 Vo Tech Rd
Tahlequah, OK 74464
School Phone:
School FAX:



Val Mullenix

◆ vmullenix@gptech.org

Job Title: Academic Center Coordinator

Great Plains Technology Center-Lawton
4500 SW Lee Blvd
Lawton, OK 73505-8399
School Phone: (580) 250-5529
School FAX: (580) 250-5677



Charles Murphy Jr

◆ charles.murphy@tulsatech.edu

Job Title: Counselor

Tulsa Technology Center-Peoria
3850 N Peoria Ave
Tulsa, OK 74147-7200
School Phone: (918) 828-2000
School FAX: (918) 828-2024



Debby Myskey

◆ debbym@centraltech.edu

Job Title: ESC Instructor

Central Tech-Sapulpa
1720 S Main St
Sapulpa, OK 74066-6453
School Phone: (918) 224-9300
School FAX: (918) 224-1234

Guidance Pictorial Directory



Jeanie Newell

◆ newelje@tulsaschools.org

Job Title: Career Guidance Specialist

Tulsa School System

3027 S New Haven

Tulsa, OK 74114

School Phone: (918) 746-6303

School FAX: (918) 746-6289



Denise North (Secondary)

◆ denise.north@metrotech.edu

Job Title: Director of Disability Services

Metro Tech-Springlake Campus

1900 Springlake Dr

Oklahoma City, OK 73111-5238

School Phone: (405) 605-4418

School FAX: (405) 424-5419



**Joyce Owens-Smith
(Secondary)**

◆ joyceo@gctech.org

Job Title:

Gordon Cooper TC

1 JC Bruton Blvd

Shawnee, OK 748049104

School Phone:

School FAX:



Linda Page

◆ linda.page@tulsatech.edu

Job Title: Career Advisor

Tulsa Technology Center

3420 S Memorial Dr

Tulsa, OK 741451390

School Phone: (918) 828-1207

School FAX:

Guidance Pictorial Directory



Richard Palazzo (Secondary)

◆ rick.palazzo@tulsatech.edu

Job Title: Director, Alternative Education

Tulsa Tech-Adm

6111 E Skelly Drive

Tulsa, OK 741477200

School Phone: (918) 828-5000

School FAX: (918) 828-5009



Shari Parish

◆ sparish@francistuttle.edu

Job Title: Customer Service Manager

Francis Tuttle-Rockwell

12777 N Rockwell Ave

Oklahoma City, OK 73142-2789

School Phone: (405) 717-7799

School FAX: (405) 717-4112



Bea Paul

◆ bpaul@autrytech.com

Job Title: Job Developer

Autry Technology Center

1201 W Willow Rd

Enid, OK 73703-2506

School Phone: (580) 242-2750

School FAX: (580) 233-8262



Amy Perkey

◆ aperkey@cvtech.edu

Job Title: Assessment Coordinator/ Special Needs

Canadian Valley Technology Center-El Reno

6505 East Hwy 66

El Reno, OK 73036-9117

School Phone: (405) 422-2266

School FAX: (405) 422-2292

Guidance Pictorial Directory



Wendy Perry

◆ wendy.perry@mntechnology.edu

Job Title: Counselor

Moore Norman Technology Center

4701 12th Ave NW

Norman, OK 73069-8399

School Phone: (405) 364-5763

School FAX: (405) 217-8277



Gay Pettit (Secondary)

◆ pettitd@cvtech.edu

Job Title: Career and Education Support Counselor

Canadian Valley Technology Center-Chickasha

1401 Michigan Ave

Chickasha, OK 73018-2136

School Phone: (405) 222-7574

School FAX: (405) 222-3839



Felisha Pinkston

◆ ffpinkston@okcps.org

Job Title: Business & Industry Career Development

Oklahoma City Public Schools

900 N Klein Ave

Oklahoma City, OK 73106-7036

School Phone: (405) 587-0071

School FAX: (405) 587-0416



Diana Plummer

◆ Dianap@centraltech.edu

Job Title: Career Counselor

Central Tech-Sapulpa

1720 S Main St

Sapulpa, OK 74066-6453

School Phone: (918) 224-9300

School FAX: (918) 224-3190

Guidance Pictorial Directory



Erin Portman

◆ eportman@choctawnation.com

Job Title:

Choctaw Nation of Oklahoa

P O Box 1210

Durant, OK 74702

School Phone:

School FAX:



Jennifer Prince

◆ jprince@gptech.org

Job Title: Career Counselor

Great Plains Technology Center-Lawton

4500 SW Lee Blvd

Lawton, OK 73505-8399

School Phone: (580) 250-5541

School FAX: (580) 250-5677



Kay Province

◆ kprovince@gmail.com

Job Title:

Watonga H.S.

P O Box 310

Watonga, OK 73772

School Phone:

School FAX:



Mary Jane Pruitt (Secondary)

◆ mjpruitt@ktc.edu

Job Title: Counselor

Kiamichi Technology Center-Atoka

PO Box 240

Atoka, OK 74525-0240

School Phone: (580) 889-7321

School FAX: (580) 889-5642

Guidance Pictorial Directory



Jennifer Rainbolt

◆ jenniferr@ictctech.com

Job Title: Counselor

Indian Capital Technology Center-Muskogee

2403 N 41st St E

Muskogee, OK 74403-1799

School Phone: (918) 687-6383

School FAX: (918) 687-6624



Cheryll Rasmussen

◆ crasmussen@gptech.org

Job Title: Financial Aid / VA Coordinator

Great Plains Technology Center-Lawton

4500 SW Lee Blvd

Lawton, OK 73505-8399

School Phone: (580) 595-1434

School FAX: (580) 250-5677



Lavonne Reavis

◆ lavonne.reavis@netech.edu

Job Title: Financial Aid Officer

Northeast Technology Centers-Pryor

PO Box 825

Pryor, OK 74362-0825

School Phone: (918) 825-5555

School FAX: (918) 825-6281



Brian Riddle

◆ brianr@pioneertech.edu

Job Title:

Pioneer TC

2101 N Ash

Ponca City, OK 74601

School Phone:

School FAX:

Guidance Pictorial Directory



Amber Riley

◆ agriley@hptc.net

Job Title: Counselor

High Plains Technology Center
3921 34th St
Woodward, OK 73801-7000
School Phone: (580) 571-6183
School FAX: (580) 571-6190



Camilla Riley

◆ camilla.riley@metrotech.edu

Job Title: Chief Officer, Guidance & Academic Services

Metro Tech-Springlake Campus
1900 Springlake Dr
Oklahoma City, OK 73111-5238
School Phone: (405) 605-4403
School FAX: (405) 424-7809



Teri Roberts

◆ troberts@meridiantech.edu

Job Title: Career Counselor/Student Org. Coord.

Meridian Technology Center
1312 S Sangre Rd
Stillwater, OK 740741899
School Phone: (405) 377-3333
School FAX: (405) 377-2076



Robert Rusher

◆ robert.rusher@metrotech.edu

Job Title: Counselor

Metro Tech-South Bryant Campus
4901 S Bryant Ave
Oklahoma City, OK 73129-8801
School Phone: (405) 605-2206
School FAX: (405) 670-6895

Guidance Pictorial Directory



Brent Ryan (Secondary)

◆ bryan@tctc.org

Job Title: Counselor

Tri County Technology Center

6101 SE Nowata Road

Bartlesville, OK 74006-6029

School Phone: (918) 331-3227

School FAX: (918) 331-3274



Jane Sarber

◆ jane.sarber@mntc.edu

Job Title: Assessment Coordinator

Moore Norman Technology Center

4701 12th Ave NW

Norman, OK 73069-8399

School Phone: (405) 364-5763

School FAX: (405) 217-8277



Loyd Saxton

◆ lsaxton@francistuttle.edu

Job Title: Career Advisor

Francis Tuttle-Rockwell

12777 N Rockwell Ave

Oklahoma City, OK 73142-2789

School Phone: (405) 717-4753

School FAX: (405) 717-4112



Troy Scott

◆ tscott@francistuttle.edu

Job Title: Career Advisor

Francis Tuttle-Rockwell

12777 N Rockwell Ave

Oklahoma City, OK 73142-278

School Phone: (405) 850-5610

School FAX: (405) 717-4112

Guidance Pictorial Directory



Nancy Seeley

◆ nseeley@eoctech.org

Job Title:

EOC TC

4601 N Choctaw Rd

Choctaw, OK 730209017

School Phone:

School FAX:



Rae Shafer

◆ raeanns@gctech.org

Job Title: Director of Student Services

Gordon Cooper Technology Center

1 J C Bruton Blvd

Shawnee, OK 74804-9104

School Phone: (405) 273-7493

School FAX: (405) 273-4704



Lynne Shimp

◆ lshimp@ktc.edu

Job Title: Counselor/AIC Coord

Kiamichi Technology Center-Stigler

1410 Old Military Rd

Stigler, OK 74462-9601

School Phone: (918) 967-2801

School FAX: (918) 967-2803



Christa Simmons

◆ ctsimmons@mid-del.net

Job Title: Counselor

Mid-Del Technology Center

1621 Maple Drive

Midwest City, OK 73110-4825

School Phone: (405) 739-1707

School FAX: (405) 739-1716

Guidance Pictorial Directory



Melinda Simpson

◆ msimpson@sotc.org

Job Title: Financial Aid Specialist

Southern Okla Technology Center

2610 Sam Noble Pkway

Ardmore, OK 73401-2100

School Phone: (580) 223-2070

School FAX: (580) 223-2120



Karla Smith

◆ ksmith@wwtech.org

Job Title:

Wes Watkins TC

7892 Hwy 9

Wetumka, OK 74883

School Phone:

School FAX:



Jeanne Smith

◆ jsmith@choctawnation.com

Job Title: Career Counselor

Choctaw Nation Of Oklahoma

1206 W. Clayton

Hugo, OK 74743

School Phone: (580) 326-4910

School FAX: (580) 326-3520



Terry Smith (Secondary)

◆ tdsmith@ktc.edu

Job Title: District SEVIS/Academic Center Coordinator

Kiamichi Technology Center-Durant

810 Waldron Rd

Durant, OK 74701-1904

School Phone: (580) 924-7081

School FAX: (580) 924-2790

Guidance Pictorial Directory



Christina Smith

◆ cmsmith@ktc.edu

Job Title: Student Services Coordinator

Kiamichi Technology Center-Hugo

PO Box 699

Hugo, OK 74743-0699

School Phone: (580) 326-6491

School FAX: (580) 326-5696



Alicia Smith

◆ alicia.smith@metrotech.edu

Job Title: Financial Aid Officer

Metro Tech-Springlake Campus

1900 Springlake Dr

Oklahoma City, OK 73111-5238

School Phone: (405) 605-4446

School FAX: (405) 424-4010



Susan Staples (Secondary)

◆ smjohnson-staples@okcps.org

Job Title: Local Director

Oklahoma City Public Schools

900 N Klein Ave

Oklahoma City, OK 731067036

School Phone: (405) 587-0073

School FAX:



Katherine Stewart

◆ kathy.stewart@tulsatech.edu

Job Title: Assessment Consultant

Tulsa Technology Center-Admin

6111 E Skelly Drive

Tulsa, OK 74147-7200

School Phone: (918) 828-5211

School FAX: (918) 828-5009

Guidance Pictorial Directory

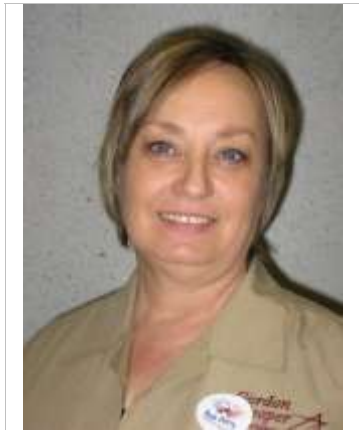


Sheila Stone (Secondary)

◆ sson@okcareertech.org

Job Title:

ODCTE
1500 W 7th Ave
Stillwater, OK 74074
School Phone:
School FAX:



Donna Stone

◆ donnas@gctech.org

Job Title: Counselor

Gordon Cooper Technology Center
1 J C Bruton Blvd
Shawnee, OK 74804-9104
School Phone: (405) 273-7493
School FAX: (405) 273-4704



Kristi Tanner

◆ ktanner4ksu@cox.net

Job Title:

Edmond-North H.S.
215 W Danforth
Edmond, OK 730033400
School Phone:
School FAX:



Karen Thomas

◆ kthomas@choctawnation.com

Job Title: Career Counselor

Choctaw Nation Career Developm
PO Box 1210
Durant, OK 74702
School Phone: (580) 920-2260
School FAX: (580) 920-1514

Guidance Pictorial Directory



James Thompson

◆ james.thompson@metrotech.edu

Job Title: Career Tech Advisor

Metro Tech-Springlake Campus
1900 Springlake Dr
Oklahoma City, OK 73111-5238
School Phone: (405) 605-4431
School FAX: (405) 424-8589



Stacy Tiger (Secondary)

◆ stiger@francistuttle.edu

Job Title: Chief Career Planning Officer

Fran Tuttle-Rw
12777 N Rockwell Ave
Oklahoma City, OK 73142-2789
School Phone: (405) 717-4216
School FAX: (405) 717-4112



Becky Trent (Secondary)

◆ btrent@wtc.tec.ok.us

Job Title: Counselor

Western Technology Center-Sayre
Route 4 Box 132
Sayre, OK 73662-9301
School Phone: (580) 928-2097
School FAX: (580) 928-9827



Tara Trotter

◆ TTROTTER@tctc.org

Job Title: Enrollment Services Specialist

Tri County Technology Center
6101 SE Nowata Road
Bartlesville, OK 74006-6029
School Phone: (918) 333-2422
School FAX: (918) 331-3274

Guidance Pictorial Directory



Laura Van Riper

◆ laura.vanriper@metrotech.edu

Job Title: Career Advisor

Metro Tech-Springlake Campus

1900 Springlake Dr

Oklahoma City, OK 731115238

School Phone: (405) 872-0591

School FAX: (405) 424-8589



Debbie Waken

◆ debra.waken@tulsatech.edu

Job Title: Career Advisor

Tulsa Technology Center

3420 S Memorial Dr

Tulsa, OK 741477200

School Phone: (918) 828-3000

School FAX:



Jessica Walden (Secondary)

◆ jwalden@arkoma.k12.ok.us

Job Title: Instructor

Arkoma Public School

PO Box 349

Arkoma, OK 749010349

School Phone:

School FAX:



Tonya Walker

◆ tonya.walker@metrotech.edu

Job Title:

Metro Tech

201 NE 48th

Oklahoma City, OK 73105

School Phone:

School FAX:

Guidance Pictorial Directory



Marjorie Wann

◆mwann@ktc.edu

Job Title: Counselor

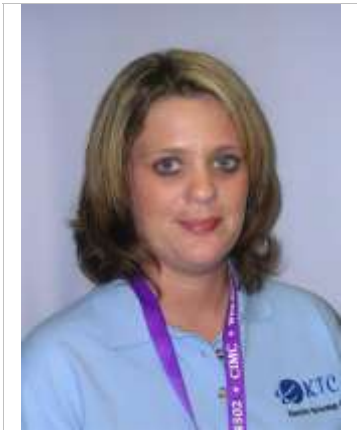
Kiamichi Technology Center-Poteau

PO Box 825

Poteau, OK 74953-0825

School Phone: (918) 647-4525

School FAX: (918) 647-4527



Rebecca Ward (Secondary)

◆bward@ktc.edu

Job Title: Coordinator, Student Services/Adu

Kiamichi Technology Center-Atoka

PO Box 240

Atoka, OK 74525-0240

School Phone: (580) 889-7321

School FAX: (580) 889-5642



Monique Watkins

◆mwatkins@francistuttle.edu

Job Title: Integrated Academic Instructor

Francis Tuttle-Rockwell

12777 N Rockwell Ave

Oklahoma City, OK 73142-2789

School Phone: (405) 717-7799

School FAX: (405) 717-4112



Ronda Weaver (Secondary)

◆rweaver@caddokiowa.com

Job Title: TANF Coordinator

Caddo-Kiowa Technology Center

P O Box 190

Fort Cobb, OK 73038-0190

School Phone: (405) 643-5511

School FAX: (405) 643-3014

Guidance Pictorial Directory



Stephanie Weissenbuehler

◆ shweissenbuehler@enidk12.org

Job Title: Autry Career Counselor

Autry Technology Center

1201 W Willow Rd

Enid, OK 73703-2506

School Phone: (580) 548-0377

School FAX: (580) 233-8262



Kathy West

◆ kathyw@ictctech.com

Job Title: Student Service Coordinator

Indian Capital Technology Center-Muskogee

2403 N 41st St E

Muskogee, OK 74403-1799

School Phone: (918) 687-6383

School FAX: (918) 687-6624



Deanna White (Secondary)

◆ dwhite@ktc.edu

Job Title: Academic Center Instructor

Kiamichi Technology Center-Poteau

PO Box 825

Poteau, OK 74953-0825

School Phone: (918) 647-4525

School FAX: (918) 647-4527



Jodie White

◆ jwhite2@ktc.edu

Job Title: Counselor/Student Services

Kiamichi Technology Center-Talihina

RR 2 Box 1800

Talihina, OK 74571-9518

School Phone: (918) 567-2264

School FAX: (918) 567-3359

Guidance Pictorial Directory



Phillip Whitlock

◆ pwhitlock@pontotocotech.edu

Job Title: Director, Student Services

Pontotoc Technology Center

601 W 33rd St

Ada, OK 74820-9791

School Phone: (580) 310-2250

School FAX: (580) 436-0236



Evelyn Wilkins

◆ ewilkins@ktc.edu

Job Title: Financial Aid/Student Services Assistant

Kiamichi Tech Center

P O Box 699

Hugo, OK 74743

School Phone:

School FAX:



Carolyn Williams

◆ carolyn.williams@metrotech.edu

Job Title: Assessment Specialist

Metro Tech-South Bryant Campus

4901 S Bryant Ave

Oklahoma City, OK 73129-8801

School Phone: (405) 605-2240

School FAX: (405) 670-6895



Lisa Williams (Secondary)

◆ lgwilliams@rrtc.edu

Job Title: Administrator

Red River Technology Center

PO Box 1807

Duncan, OK 73534-1807

School Phone: (580) 255-2903

School FAX: (580) 255-5652

Guidance Pictorial Directory



Teresa Williams

◆ twilliams@cvtech.edu

Job Title: Financial Aid Officer

Canadian Valley Technology Center-Chickasha

1401 Michigan Ave

Chickasha, OK 73018-2136

School Phone: (405) 224-7220

School FAX: (405) 222-3839



Dana Wood

◆ dwood@autrytech.com

Job Title: Financial Aid Officer

Autry TC

1201 W Willow

Enid, OK 737032506

School Phone:

School FAX:



Luke Workman

◆ lworkman@ktc.edu

Job Title: Financial Aid Specialist

Kiamichi Technology Center-Wilburton

PO Box 548

Wilburton, OK 74578-0548

School Phone: (918) 465-2323

School FAX: (918) 465-3666



William Young

◆ william.young@metrotech.edu

Job Title: Workforce Transition Coordinator

Metro Tech-Ace

201 NE 48th St

Oklahoma City, OK 73105-331

School Phone: (405) 605-3345

School FAX: (405) 528-1512

Guidance Pictorial Directory



Nancy Young

◆ nancy.young@tulsatech.edu

Job Title: Career Advisor

Tulsa Technology Center-Admin

6111 E Skelly Drive

Tulsa, OK 74147-7200

School Phone: (918) 828-5262

School FAX: (918) 828-5009



Del Yowell

◆ dyowell@sotc.org

Job Title:

Southern Oklahoma Technology Center

2610 Sam Noble Parkway

Ardmore, OK 734012100

School Phone:

School FAX:



Jeanie Zagar

◆ jeaniez@meridiantech.edu

Job Title: Director, Career Planning Center

Meridian Technology Center

1312 S Sangre Rd

Stillwater, OK 74074-1899

School Phone: (405) 377-3333

School FAX: (405) 372-3466



Kerry Zehr

◆ kerry.zehr@tulsatech.edu

Job Title: Counselor

Tulsa Technology Center-Riverside

801 East 91st

Tulsa, OK 74132

School Phone: (918) 828-4038

School FAX: (918) 828-4009