

**Environment**—Different breeds of cattle are adapted to thrive under different conditions. Such factors include:

- Heat and cold tolerance
- Feed preference and foraging ability
- Disease and parasite resistance

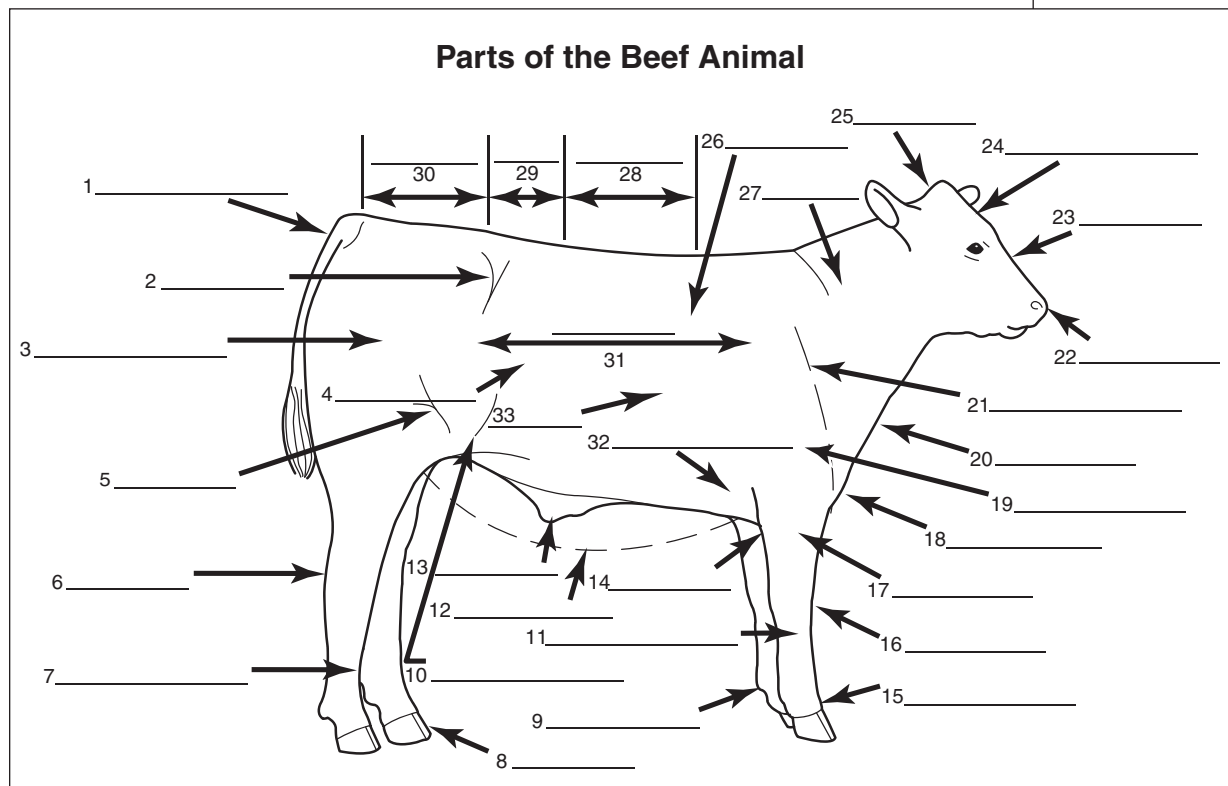
**Personal preference**—The producer should feel comfortable with the breed of cattle selected. Factors that may influence personal preference include:

- Horned or polled
- Temperament
- Management requirements

**Objective 6:  
Label the parts of a beef animal.**

It is important to know and use the correct terms when discussing the anatomy of cattle—especially when working with such people as veterinarians, potential clients, or other cattle producers.

Neatly write in the parts of the beef animal on the illustration provided in this objective to help you learn the correct terms. Your instructor will help you complete the diagram.



## Objective 7:

Match parts of the beef animal with the correct term (Assignment Sheet 2).

## Objective 8:

Match common cattle and beef industry terms with their definitions.

Like any industry, the beef cattle industry uses specific terms that people outside the industry may not know or understand. Knowledge of these terms makes it possible to communicate clearly with others in the industry.

### Common cattle terms:

- **Bovine**—The species name for cattle.
- **Breed**—A group of animals having a common origin and characteristics that distinguish it from other groups within the same species.
- **Bull**—A mature male bovine that has not been castrated.
- **Calf**—A newborn or young bovine younger than one year.
- **Conformation**—An animal's overall structure as compared to an ideal.
- **Cow**—A mature female bovine.
- **Crossbred**—An animal whose sire and dam are not of the same breed.

**NOTE:** Crossbreeding allows producers to take advantage of superior traits of several different breeds. Cattle are often crossbred to improve vigor and growth.

- **Dam**—The female parent.
- **Finish**—The distribution of muscle and fat on a beef animal being prepared for slaughter.
- **Frame**—The overall size and support structure of the animal.
- **Heifer**—A bovine female that has not borne a calf.
- **Muscling**—The distribution and appearance of muscles in a beef animal.
- **Polled**—Naturally hornless.
- **Purebred**—An animal of a recognized breed that is eligible for registry in the official herdbook of that breed.