

# Low Speed Buffing



# Low Speed Buffing Contest Guidelines

Each contestant must demonstrate the use of low speed or slow speed buffing on a dry floor using proper safety techniques.

Each contestant will be responsible for mounting the pad on the pad holder or drive pad and adjusting the handle to the proper height. The cord should be placed behind the contestant for safety. The contestant will then be required to demonstrate the operation of the buffer by placing both hands on the buffer and using the movement of the handle to move the machine right and left. Buffing forward with feet slightly apart, the student will be required to buff an area approximately 13' x 13', avoiding hitting the baseboard or walls.

Each contestant will be provided the necessary equipment or components to complete the skill task to be judged in the contest, or the contestant may furnish his or her own equipment.

Each contestant will be provided the same project.

As soon as the contestant has completed the assignment and is fully satisfied with the project and workmanship, the contestant should signal the judge and stop work. This will determine the elapsed time and speed. The project will be judged on workmanship and operational techniques.

Contestants will be rated on the basis of total scores, including such things as accuracy, speed, acceptable procedures, workmanship and safety.

Maximum time allowed for buffing will be 10 minutes. There will be a 5 point penalty deducted for each minute over 10 minutes: so time will be a definite factor in determining winners.

Contestants will be asked the following question:

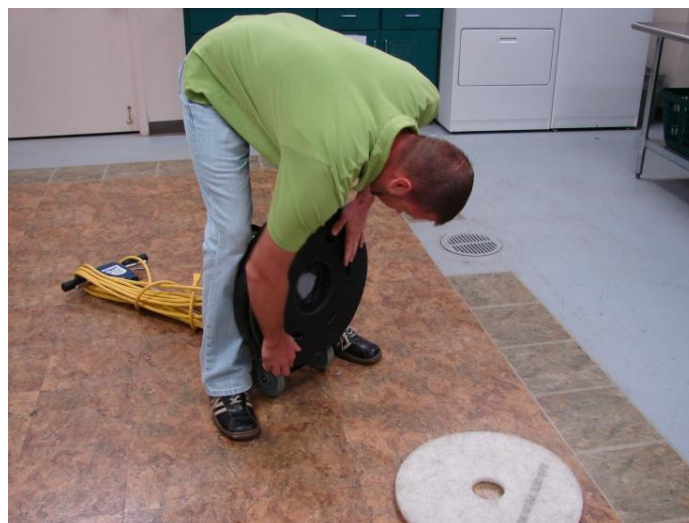
What is a red, green/blue, black or white/tan pad used for?

- Red- buffing with slow speed machine
- Green/Blue- scrubbing
- Black- stripping
- White/Tan- polishing

# How to Mount the Brush or Pad Holder

NOTE: If mounting pad holder, pad must be properly centered on holder.

1. Lock handle in straight up position.
2. Lower handle to floor exposing the underside of the machine.
3. Place on drive lug in 12 o'clock position.
4. Straddle machine with brush in hand.
5. Place one clutch plate slot on brush in 12 o'clock position.
6. Mount brush (or pad holder) on drive lug.
7. Twist brush.
8. It's on!



## How to Operate the Low Speed Buffer

1. Mount brush or pad holder and adjust handle.
2. Rest machine handle against you.
3. Turn on machine.
4. Hold both handles.
5. To move machine to the RIGHT, RAISE the hands slightly (R-R).
6. To move machine to the LEFT, LOWER the hands slightly (L-L).



## How to Adjust the Handle

1. Loosen the handle lock.
2. Adjust handle to beltline.
3. Lock handle in position.



## Safety Pointers in Using the Buffer

1. Keep feet slightly apart with one foot in front of the other.
2. Make sure the cord will not get tangled in the brush. Keep cord plugged in behind you.
3. Report any malfunction or damage (i.e. frayed cord) so it can be repaired.
4. Keep hands on both handles. Steady machine by resting it against you.
5. Be sure cord is plugged in behind the operator and remains in a safe position while using the machine.
6. Keep an eye on people in the area where you are working. Do not use equipment or leave it temporarily where people may trip over it.
7. Select the right pad for the job.



# LOW SPEED BUFFING OPERATION

## Rating Sheet

Contestant Number \_\_\_\_\_

Category	Excellent	Very Good	Good	Fair	Poor	Comments
Identify use or purpose of red, green/blue black or white/tan pad.	10	8	6	4	2	
Mount the pad on pad holder or drive pad.	10	8	6	4	2	
Adjust handle.	10	8	6	4	2	
Check cord & plug in machine.	10	8	6	4	2	
<b>Buffer Operation</b>						
Both hands are placed on buffer when starting & stopping.	10	8	6	4	2	
Correct movement of machine (right - rise and left - lower)	10	8	6	4	2	
Avoid hitting walls, baseboard & furniture.	10	8	6	4	2	
Buff designated area in a safe manner by making sure cord does not get tangled in brush.	10	8	6	4	2	
Stand with feet slightly apart (maintain balance – one foot in front of the other).	10	8	6	4	2	
Cord is plugged in behind operator & remains behind operator during operation.	10	8	6	4	2	
<b>Prepare Equipment for Storage</b>						
Disassemble by unplugging & rolling cord, & removing pad & pad server.	10	8	6	4	2	
<b>Total Points</b>						
<b>Time Penalty* (minus 5 points for each 10 minutes over)</b>						
<b>Resume Penalty* (minus 0-5 points form total score)</b>						
<b>Judges' Final Score</b>						

**Start Time:** \_\_\_\_\_

**Finish Time:** \_\_\_\_\_