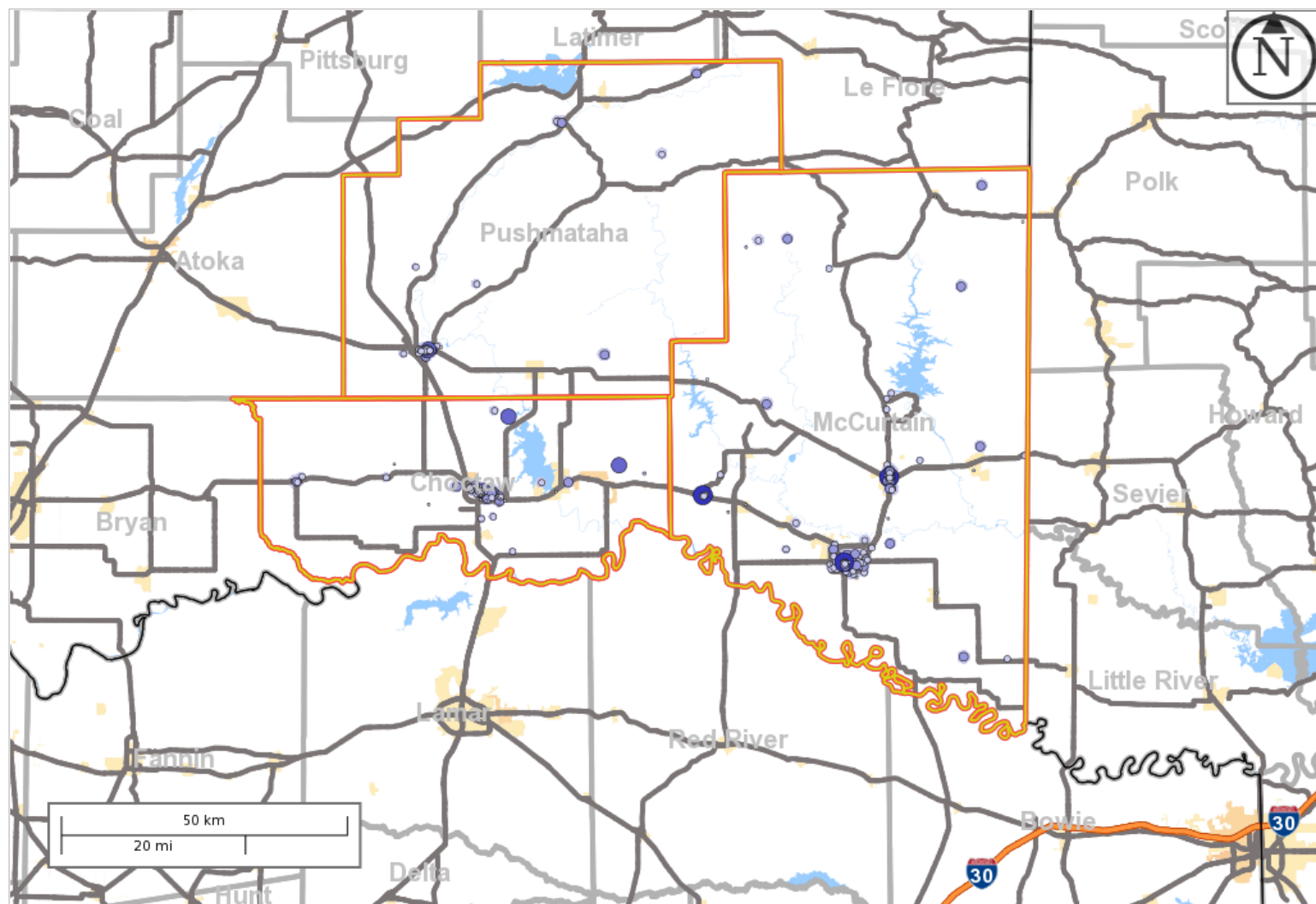


Created by the U.S. Census Bureau's OnTheMap <http://onthemap.ces.census.gov> on 02/18/2014

Counts and Density of All Jobs in Work Selection Area in 2011 All Workers



Map Legend

Job Density [Jobs/Sq. Mile]

- 5 - 304
- 305 - 1,202
- 1,203 - 2,698
- 2,699 - 4,794
- 4,795 - 7,488

Job Count [Jobs/Census Block]

- 1 - 4
- 5 - 64
- 65 - 320
- 321 - 1,009
- 1,010 - 2,464

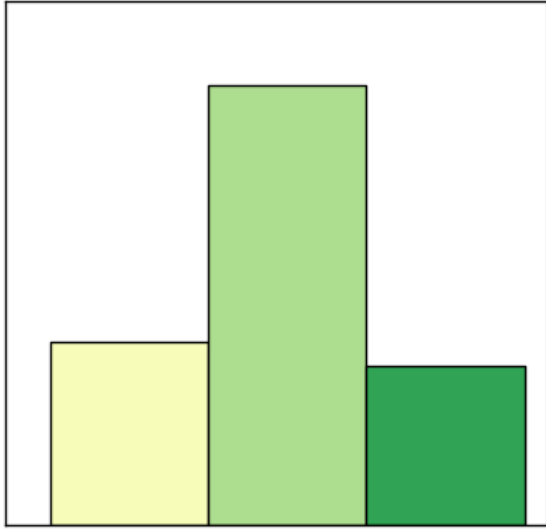
Selection Areas

- 👉 Analysis Selection

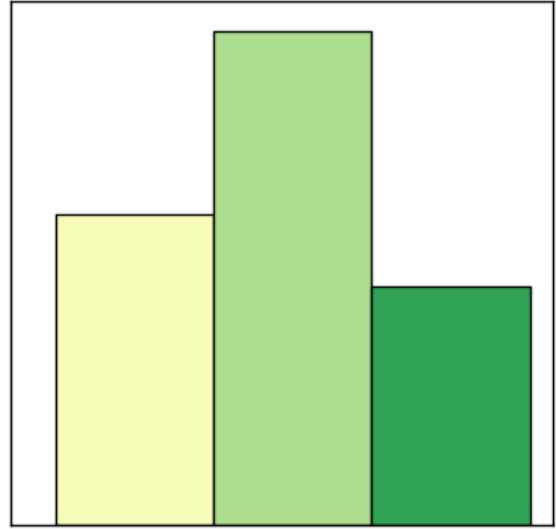


All Jobs for All Workers by Total in 2011

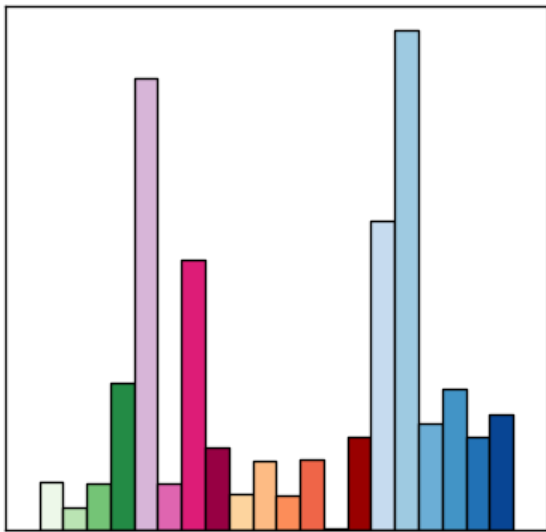
Employed in Selection Area



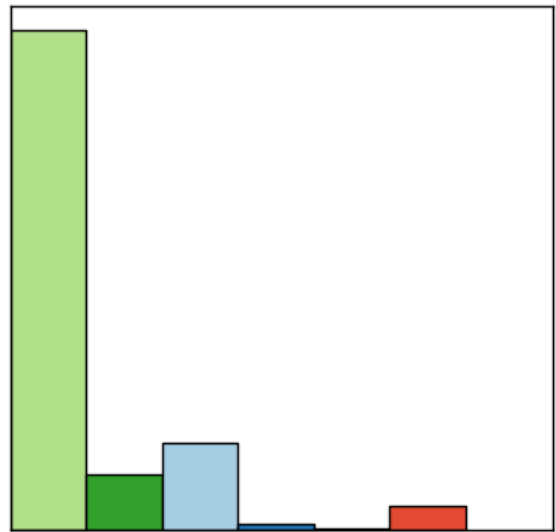
Age



Earnings



Industry Sector



Race

All Jobs for All Workers by Total in 2011

Employed in Selection Area

Total	2011	
	Count	Share
Total All Jobs	17,874	100.0

<u>Total</u>	2011	
	<u>Count</u>	<u>Share</u>
Total All Jobs	17,874	100.0

Additional Information

Analysis Settings

Analysis Type	Area Profile
Selection area as	Work
Year(s)	2011
Job Type	All Jobs
Labor Market Segment	All Workers
Selection Area	Choctaw County, OK from Counties
Advanced Modification	Add Selection Areas
Advanced Selection	Pushmataha County, OK; Choctaw County, OK; McCurtain County, OK from Counties
Selected Census Blocks	11,481
Analysis Generation Date	02/18/2014 14:57 - OnTheMap 6.2
Code Revision	a12f12cf37f990b17ae7dd6623f608d9384e8f29
LODES Data Version	20130430

Data Sources

Source: U.S. Census Bureau, OnTheMap Application and LEHD Origin-Destination Employment Statistics (Beginning of Quarter Employment, 2nd Quarter of 2002-2011).

Notes

1. Race, Ethnicity, Educational Attainment, and Sex statistics are beta release results and are not available before 2009.
2. Educational Attainment is only produced for workers aged 30 and over.
3. Firm Age and Firm Size are not available before 2011.
4. Firm Age is only available for All Private Jobs and only for Work areas.
5. Firm Size is only available for All Private Jobs and only for Work areas. For firms 1 year and older, firm size is the national size of the firm in March of the previous year.

Kiamichi Technology Center - Hugo

Counties: Pushmataha, Choctaw and McCurtain

Work Area Profile Report

Total Primary Jobs

	2011	
	Count	Share
Total Primary Jobs	16,931	100.0%

Jobs by Worker Age

	2011	
	Count	Share
Age 29 or younger	3,992	23.6%
Age 30 to 54	9,458	55.9%
Age 55 or older	3,481	20.6%

Jobs by Earnings

	2011	
	Count	Share
\$1,250 per month or less	4,519	26.7%
\$1,251 to \$3,333 per month	8,331	49.2%
More than \$3,333 per month	4,081	24.1%

Jobs by NAICS Industry Sector

	2011	
	Count	Share
Agriculture, Forestry, Fishing and Hunting	314	1.9%
Mining, Quarrying, and Oil and Gas Extraction	140	0.8%
Utilities	301	1.8%
Construction	943	5.6%
Manufacturing	2,986	17.6%
Wholesale Trade	288	1.7%
Retail Trade	1,723	10.2%

Jobs by NAICS Industry Sector

2011

	Count	Share
Transportation and Warehousing	528	3.1%
Information	227	1.3%
Finance and Insurance	430	2.5%
Real Estate and Rental and Leasing	221	1.3%
Professional, Scientific, and Technical Services	444	2.6%
Management of Companies and Enterprises	3	0.0%
Administration & Support, Waste Management and Remediation	576	3.4%
Educational Services	1,999	11.8%
Health Care and Social Assistance	2,975	17.6%
Arts, Entertainment, and Recreation	697	4.1%
Accommodation and Food Services	834	4.9%
Other Services (excluding Public Administration)	578	3.4%
Public Administration	724	4.3%

Jobs by Worker Race

2011

	Count	Share
White Alone	12,642	74.7%
Black or African American Alone	1,341	7.9%

Jobs by Worker Race

2011

	Count	Share
American Indian or Alaska Native Alone	2,197	13.0%
Asian Alone	130	0.8%
Native Hawaiian or Other Pacific Islander Alone	24	0.1%
Two or More Race Groups	597	3.5%

Jobs by Worker Ethnicity

2011

	Count	Share
Not Hispanic or Latino	15,946	94.2%
Hispanic or Latino	985	5.8%

Jobs by Worker Educational Attainment

2011

	Count	Share
Less than high school	1,859	11.0%
High school or equivalent, no college	4,505	26.6%
Some college or Associate degree	4,217	24.9%
Bachelor's degree or advanced degree	2,358	13.9%
Educational attainment not available (workers aged 29 or younger)	3,992	23.6%

Jobs by Worker Sex

2011

	Count	Share
Male	7,866	46.5%

Jobs by Worker Sex

2011

	Count	Share
Female	9,065	53.5%

Report Settings

Analysis Type	Area Profile
Selection area as	Work
Year(s)	2011
Job Type	Primary Jobs
Labor Market Segment	All Workers
Selection Area	Choctaw County, OK from Counties
Advanced Modification	Add Selection Areas
Advanced Selection	Pushmataha County, OK; Choctaw County, OK; McCurtain County, OK from Counties
Selected Census Blocks	11,481
Analysis Generation Date	02/18/2014 15:18 - OnTheMap 6.2
Code Revision	a12f12cf37f990b17ae7dd6623f608d9384e8f29
LODES Data Version	20130430

Source: U.S. Census Bureau, OnTheMap Application and LEHD Origin-Destination Employment Statistics (Beginning of Quarter Employment, 2nd Quarter of 2002-2011).

Notes:

1. Race, Ethnicity, Educational Attainment, and Sex statistics are beta release results and are not available before 2009.
2. Educational Attainment is only produced for workers aged 30 and over.
3. Firm Age and Firm Size statistics are beta release results and are not available before 2011.